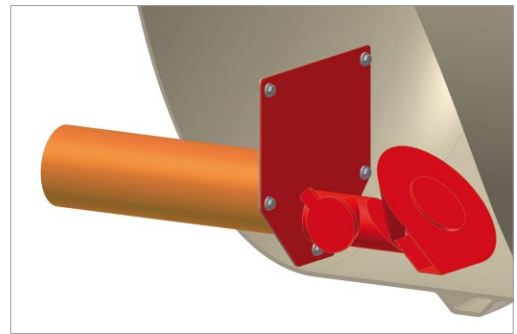
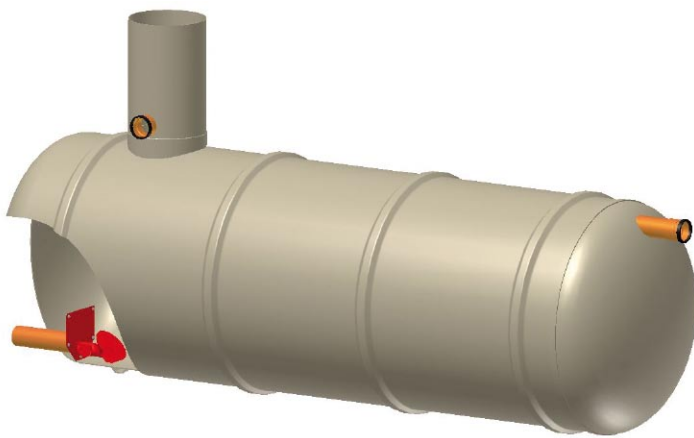


Conder Products is a leading supplier of **stormwater** management systems

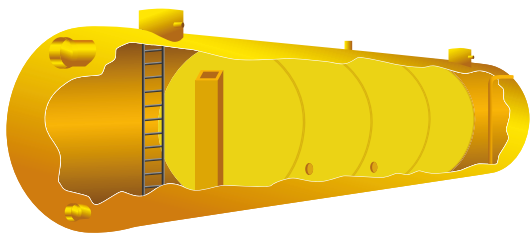


t: 08702 640004 e: sales@conderproducts.com

or visit our website: www.conderproducts.com

FEATURES & BENEFITS:

- Conder GRP tanks offer a factory built sealed watertight system, unlike the cell type product which relies on a thin membrane installed on site. This can be a particular problem in areas of high ground water as the Geocellular products are unlikely to remain completely sealed and will take in groundwater and result in a poorly performing system.
- Conder GRP tanks can be installed with a granular surround, concrete backfill not required using our class 1 shells.
- Single or multiple tank systems available offering a flexible layout to suit site space restrictions.
- Totally underground with manhole access only at ground level.
- Unlike other systems such as Geocellular modules they are accessible for maintenance and removing silt.
- Flow regulators and pumps can be installed in our GRP tanks, removing the need for a separate and often deep and expensive manhole or pumping station.
- Conder GRP tanks can be installed in trafficked areas provided our installation guidelines are followed.
- Conder will provide site specific drawings in Autocad and/or PDF format for all attenuation schemes, generally following receipt of an order.
- Conder tanks are constructed from GRP and are not subject to corrosion.
- All applications $>5\text{m}^3$ catered for with Conder offer.
- Other products from the Conder range can be utilised with our attenuation tanks to provide a complete system, e.g. oil/water separators and rainwater harvesting systems.



t: 08702 640004 e: sales@conderproducts.com

or visit our website: www.conderproducts.com